



Agenda

- Intel Overall Strategy
- Background & Motivation for INAI
- INAI Launch
- Roadmap/Summary

Economic impact of AI

Global



\$15.7T

Potential contribution
to global economy by
2030

+14%

Growth in
Global GDP
by 2030

India



Potential to add

\$957B

to India's economy in 2035

What does it take?

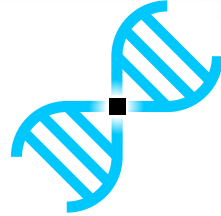
- Data
- Talent
- Adoption driven by Solutions
 - Applied R&D | Entrepreneurship | Adoption
- Policy Enablement

Intel India AI Strategy



Skilling

- Skilling for youth, govt leaders, developers and citizens
- AI4Youth – 200K+ youth trained
- Plan to train 5000+ Govt Employees this year
- Plan to train citizens in local languages
- Re-skilling



Applied R&D

- INAI – Applied AI Research Center (<http://inai.ai>)
- Solve National Problems using AI – Healthcare, Smart Mobility
- In collaboration with Govt, Academia



Startup

- Facilitate AI Startups
- Develop an ecosystem to address national challenges



Adoption

- Emerging Technology Center with ISB
- Pilots to adopt AI tech (Road safety)
- Handhold and support in building capacity and implementation of AI Solution to improve governance

Collaborative effort with Govt Ministries & Academia

INAI: Applied AI @ IIT Hyderabad



INAI is an initiative to apply AI to population scale problems in the Indian context, combining research and translation.

Healthcare & Smart Mobility are the current focus domains.

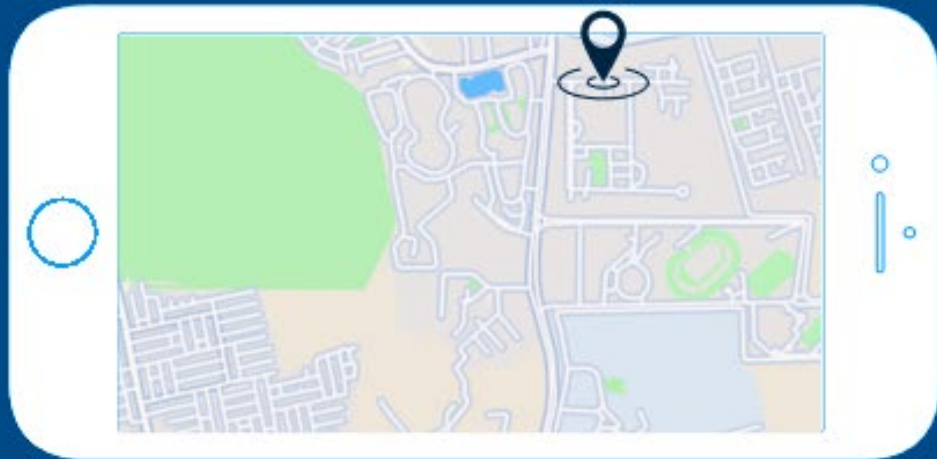


Centre

Founding Partners

IIIT Hyderabad

Host Primary Investigator
AI Research, Physical Space



Telangana State Govt.

Patron: Catalyze, Enable, Adopt

Intel

Principal Industry Partner

Technology &
Architecture

PHFI

Public health
Foundation of India

Healthcare

Domain Partner
Domain Expertise

TBD

Smart Mobility

Domain Partner



INAI

Objectives

Do High Impact Research

To solve national level societal problems

India Datasets

Data sets and algorithms from & for India

Tools & Frameworks

Population scale, computing infrastructure, tools, & frameworks

Innovation & Entrepreneurship

Translate Algorithms & IP into Products

Attract Global Talent

Build an eco-system of AI skillsets & capability

Collaboration Considerations



Immersion

(Inside vs. Outside)

Ambition

(vs. Other worldwide Institutions)

Pace & Planning

(Quarters vs. Years)

End Consumer Orientation

(User Experience/Usability/Cost etc.)

Customer Mindset

(Product vs. Tech)

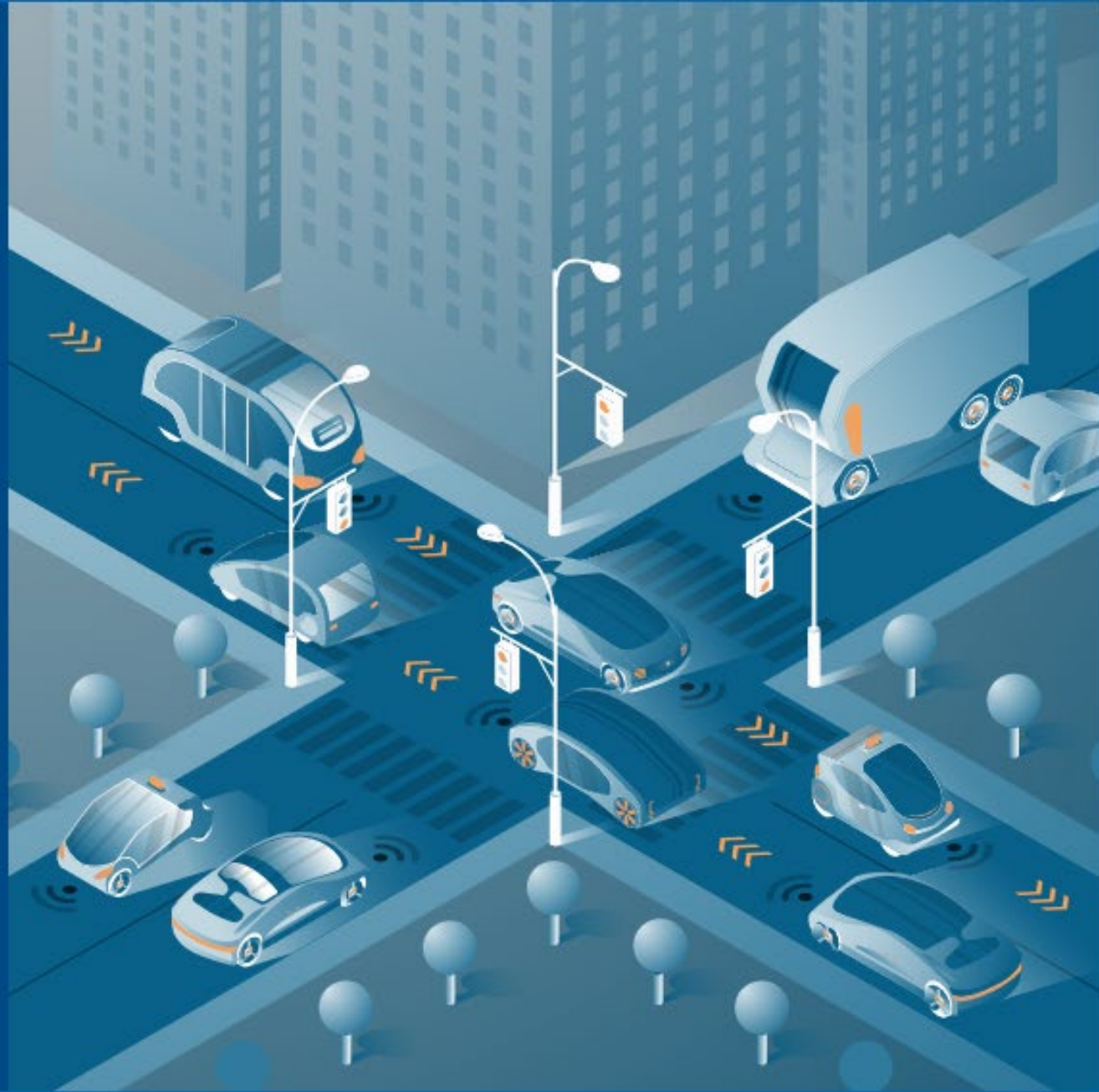
Focus Area

Smart Mobility

Vision Zero
No life lost to road accident

Algorithms
Platform/Toolkits/SDK
Policy

India Driving Dataset
IDD



Healthcare Approach: Multiple Dimensions

■ Population Scale Data Sets

- Focus on Diversity & Scale
- Own & Partnerships
- Multi Layered Secured Access

■ Tools/Framework

- Data hosting platform/Compute Infra
- Secure Federated ML Framework
- Tools for Clinical Researchers

• Collaborations

- National & International
- Datasets, Tools & Applications
- CDs, Cancer, Mental Health, Drug Discovery

• Focus Areas

- Universal Primary Health care
- Early Screening & Risk Stratification (Cancer, Mental Health)
- Drug Discovery

Focus Areas

Healthcare

Public Health

PHC | Genomic Surveillance

Screening, Early Prediction & Therapeutics solutions for top cancers in India

Oral | Brain | Lung | Gastric

Mental Health

Drug Discovery

Ultra Large Protein-Ligand Dataset



Summary

Identify & Solve

Population Scale Challenges
In Healthcare & Smart Mobility

Build A Foundational Layer

An ecosystem bringing together all
stakeholders under one umbrella to
solve Population Scale challenges

Solve

India's Population
Scale challenges
using AI